



Flat 2, 28 Claude Road

, Roath, CF24 3PZ

£1,350 Per Month

REF: 19635221

ONLINE AND PHYSICAL VIEWINGS AVAILABLE

3 BEDROOMS - 1 BATHROOM - £1,350 PCM - AVAILABLE NOW - WATER INCLUDED - FIRST FLOOR FLAT - LARGE OPEN PLAN LIVING/KITCHEN AREA - FULLY FURNISHED - EVEN SIZE BEDROOMS

- 3 BEDROOMS
- 1 BATHROOM
- AVAILABLE NOW
- EVEN SIZE BEDROOMS
- £1,350 PCM
- LARGE OPEN PLAN LIVING/KITCHEN AREA
- 9 MONTH MINIMUM CONTRACT
- WATER INLCUED
- FULLY FURNSIHED

Viewing

Please contact our Cathays Head Office Office on 02922331425 if you wish to arrange a viewing appointment for this property or require further information.



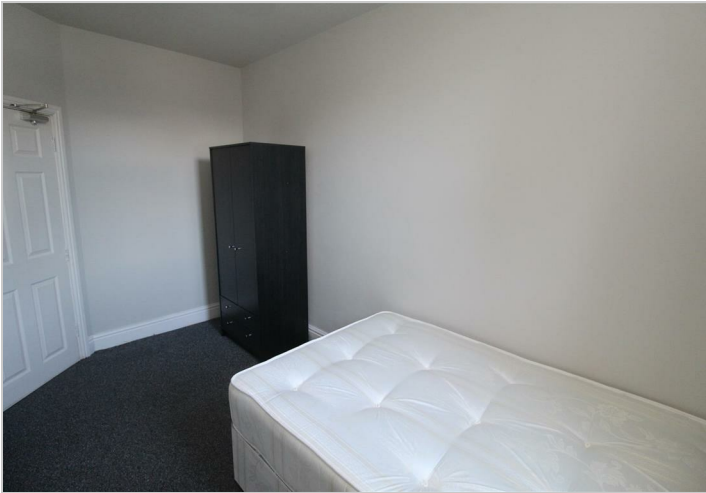
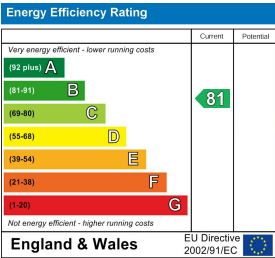
Floor Plan



Area Map



Energy Efficiency Graph



These particulars, whilst believed to be accurate are set out as a general outline only for guidance and do not constitute any part of an offer or contract. Intending purchasers should not rely on them as statements of representation of fact, but must satisfy themselves by inspection or otherwise as to their accuracy. No person in this firms employment has the authority to make or give any representation or warranty in respect of the property.